

INVITATION TO THE CLA HAMPSHIRE BRANCH LATE SUMMER SOCIAL AND AGM

18 SEPTEMBER 2025
ROTHERFIELD PARK



WWW.CLA.ORG.UK



HAMPSHIRE AGM

This year's Annual General Meeting is to be held on Thursday 18th September 2025 at Rotherfield Park, Rotherfield Park Estate, GU34 3QE.

PROGRAMME

- 10.30 Arrivals with tea & coffee
- 11.00 Hampshire AGM
- 11.15 Talk by Joe Evans– CLA Vice President
- 11.30 Introduction to the Estate by the Host
- 12.00 Reception Drinks
- 12.30 Lunch
- 13.45 Tours – workshop & Newton Wood Barn alternative Provision
- 15.30 Depart

CLA South East would like to thank Savills, Forsters and Old Mill for their support..



ANNUAL GENERAL MEETING AGENDA

1. Apologies for absence
2. To confirm the Minutes of the last meeting held on 25th September 2024
3. Matters arising from the Minutes
4. Election of Officers for 2025/26
 - a. President
 - b. One representative to Council
 - c. Committee
5. To receive and adopt the Chairman's Annual Report for 2024/25
6. Any other business

Nominations for office or for membership of the Committee as given in item 4, or any resolution a member may wish to propose, must reach the Director South East, Tim Bamford, in writing by 4th September 2025

ROTHERFIELD PARK

Rotherfield, a family owned and run estate, is on a mission to build 'a thriving community for today and tomorrow' and continuously improve its soils and all outputs (social/economic/environmental) from its landscape. Alongside conventional estate farming and land management activities (two dairy units, a regenerative arable system, woodland trending towards continuous cover natural regen and diverse wildlife projects), Rotherfield's recent initiatives include the installation of a community market garden in East Tisted and the opening of Newton Wood Barn Alternative Provision for children who have struggled to prosper in mainstream schools.

Since opening in September 2024, Newton Wood Barn Alternative Provision has been under huge demand and now works with over 20 Hampshire Schools to support approximately 40 families. While the provision is well equipped with engaging learning spaces much of the children's time is spent discovering the craftsmanship on the estate and the surrounding landscape including woodwork in the carpentry workshop and time in the community garden learning about seasonal vegetables, fruits, and flowers as part of the provision's commitment to sustainability and land-based learning.

Furthermore, Rotherfield is working hard to thoughtfully restore and rejuvenate many of its properties with a long term mindset - retrofitting breathable low carbon insulation to single skin buildings. Where possible, building materials are sourced from Rotherfield or locally. Working with wood felled from Rotherfield the building team have created some remarkable additions in keeping with each property's heritage importance

Employing approximately 45 people across different teams, future employment prospects are looking bright as Rotherfield strives towards more educational settings and apprenticeship opportunities for the next generation.

To book your place at the AGM please login to your 'My CLA' account on www.cla.org.uk and click on Events. Members tickets cost £42 plus VAT, non members £65 plus VAT. You can pay by card online. If you are having difficulties, please call the South East office on 01264 358195 or southeast@cla.org.uk.

Bookings close Thurs 4th September 2025

MINUTES OF THE 2024 HAMPSHIRE ANNUAL GENERAL MEETING

HELD AT THE FACCOMBE ESTATE SHOOT LODGE AT 10 AM ON WEDNESDAY 25 SEPTEMBER 2024.

Present:

Branch President, Hallam Mills

Branch Chair Robert Sutcliffe

CLA Director of Policy & Advice Judicaelle Hammond

CLA SE Regional Director, Tim Bamford

58 Members and their guests

The Branch President welcomed everyone to the AGM and thanked Al Brooks for kindly hosting the AGM

1) Apologies for Absence

4 formal apologies had been received.

2) To confirm the Minutes of the last Meeting

The Minutes of the last Annual General Meeting held at Ramsbury Estate on the 19th September 2023 were confirmed as a true record and signed by the Branch President.

3) Matters Arising from the Minutes

There were no matters arising from the Minutes.

Election of Officers for 2024/25

A) Election of Branch President

The Branch Chairman took over the meeting for the election of the current Branch President Hallam Mills, who was proposed by Rodney Morgan Giles, seconded by Alistair Cutts and carried unanimously.

B) One Representative to the CLA Council

The meeting passed back to the Branch President. Jamie Balfour proposed Robert Sutcliffe for Representative to Council, which was seconded by Matt Gilks and carried unanimously.

C) Branch Committee

The Branch President thanked the committee for their ongoing support and then read out the following names for re-election to the committee:

Jamie Balfour
Robert Sutcliffe
David Butler

David Pardoe
Simon Barker
Mark Charter

Becca Corbett
John Durnell
John Jervoise
Josie Palmer
Penny Stokes

Alistair Cutts
Matt Gilks
Rodney Morgan-Giles
Victoria Read
Mark Thistlethwayte

The election of the Committee for 2024/25 was proposed by Sonja Porter, seconded by William Selbourne and carried unanimously.

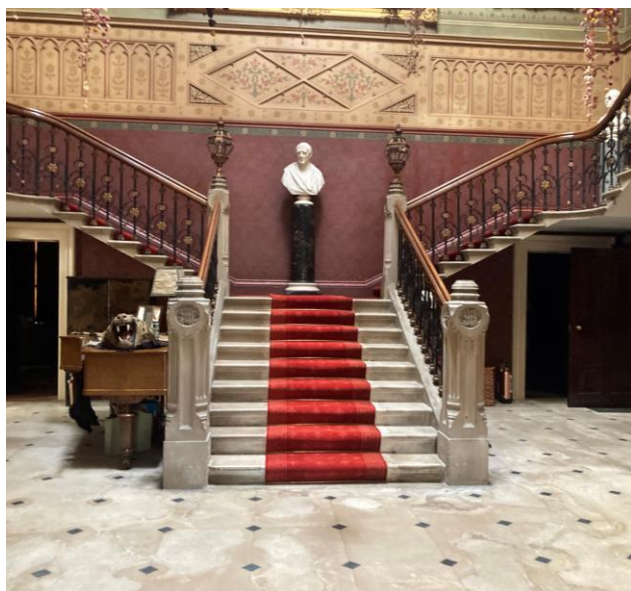
4) To Adopt the Chair's Annual Report for 2023/24

The adoption of the Annual Report was proposed by Penny Stokes, seconded by Andrew Forrester and carried unanimously.

5) Any Other Business.

There was no other business.

The Branch President concluded the Hampshire AGM and introduced CLA Director of Policy and advice Judicaelle Hammond..



HAMPSHIRE BRANCH COMMITTEE

PRESIDENT: Hallam Mills

VICE PRESIDENT Major General JMJ Balfour

CHAIRMAN: Robert Sutcliffe

COMMITTEE:

Simon Barker
Mark Charter
Alistair Cutts
Matt Gilks
Rodney Morgan Giles
David Pardoe
Penny Stokes

David Butler
Becca Corbett
John Durnell
John Jervoise
Josie Palmer
Victoria Read
Mark Thistlethwayte



CHAIRMAN'S REPORT - HAMPSHIRE

Welcome to the CLA Hampshire branch AGM 2025.

The storm clouds created by the government's Autumn Budget remain overhead, with our industry rarely out of the headlines since then. It did not feel like a Budget that was pro-growth or investment, even before we turn to the issue of capping vital inheritance tax reliefs for farmers and businesses. A lot has been said and written about this, and I won't go over all of the compelling reasons why the government case does not stack up in this column, other than to say that combined with other announcements it feels like a continuous Westminster attack on those who live and work in the countryside.

But the CLA will not give up, and the Spending Review in June did offer a little clarity over future budgets. Your representatives in London and the regions have been taking the fight to the Treasury and Defra ministers: CLA arguments and evidence have been used repeatedly in both Houses of Parliament and by backbench rural MPs who are feeling the heat. You will have seen that the CLA has featured heavily in the media and we are all grateful for the impressive performance of our President.

Here in Hampshire, your committee has been meeting to discuss the fallout from the Budget along with a host of other topics relating to land management and rural businesses. From planning, food security, the Land Use Framework, infrastructure projects and long-term farming policy to the use of drones. We have also been meeting with councils and the police to ensure members' voices are heard, as well as getting MPs out onto farms to meet members and hear about issues first hand. If you are able to host a visit please let us know – it would be a great help.

The CLA team has regularly appeared in the county's press, while advisers Lucy Charman and Rosie Salt-Crockford have helped local members with queries ranging from planning to ELM schemes.

I encourage you to make the most of your membership by using the fantastic advice service and by attending events. We also returned to the New Forest and Hampshire County Show for our 12th annual rural awards, celebrating even more success stories and achievements at a presentation and drinks reception.

Please also remember that as a CLA member you can add additional people to your membership at no extra cost. This can be other members of your family or team who will then receive updates, can access advice and join events.

This is my final AGM as your Chairman, so I would like to thank our knowledgeable and dedicated Hampshire branch committee for their support, as well as the CLA teams in the South East and nationally for their continued hard work on behalf of us all. The world does not stand still and the conflicts in Ukraine and the Middle East continue to underline the need for strong defence and food security. On top of this we all face fiscal pressures that were unimaginable a year ago. There will be much for my successor to contemplate and for the CLA to represent on behalf of our members. Bonne chance!

Robert Sutcliffe

CLA REGIONAL CONTACTS

CLA South East, Fosse House, East Anton Court,
Icknield Way, Andover, Hampshire, SP10 5RG
Tel: 01264 358195

Regional Director - Tim Bamford
tim.bamford@cla.org.uk

Events Manager – Emma Harding
emma.harding@cla.org.uk

Rural Advisers:
Lucy Charman - lucy.charman@cla.org.uk
Rosie Salt-Crockford - rosie.saltcrockford@cla.org.uk

Communications Manager - Mike Sims
michael.sims@cla.org.uk

Regional Co-ordinator – Evette Curtis
evette.curtis@cla.org.uk

Regional Sales Manager – James Mulleneux
james.mulleneux@cla.org.uk

Membership Relations Manager – Daniel Pownall
Daniel.pownall@cla.org.uk